



THE PALETTE



VOLUME 18, ISSUE 6

JUNE 2017

The next meeting

June RGAA Meeting
Presenter: Jeff Warren
Saturday, June 17th at 10:00 AM
St. Mark's Episcopal Church
431 Richmond Pl. NE

Directions: Driving on Lomas, turn South on Dartmouth one block East of Girard and go one block South to the Church, or turn South off Lomas on Richmond Dr., and proceed one block South to Richmond Pl NE. Driving on Central, turn North on Dartmouth and go about 3½ blocks.

June presentation by Jeff Warren



"The four pics are me channeling Dali with my painting, *Hello, Dali*, *Excalibread*, *The Birth of Venus* and *Teddy Bear Salad*.

When I was asked to present at the RGAA June meeting, I was told that several folks had said they wanted to 'get into my head' (presumably because of the playful/weird paintings I create). I am not sure that is such a great idea since I have only been out of rehab for a couple of weeks. Anyway, I thought it would be challenging and fun to put myself in front of such a classy group of artists to duck flying tomatoes. Hopefully, I will not be disbarred. I plan to speak a bit about my early influences and how at a very early age, paint-by-number kits enchanted me. I

will try to speak about how I come up with ideas and how I attempt to translate them to the canvas. I hope the event will be more of a dialogue than a monologue. I was an actor for 25 years, so I hope my tendency to orate will be quashed either by engaging questions or loud snores. Looking forward!"

July marks the one year anniversary of Warren Fine Art & Collectibles in Old Town. We will host quite the bash at the July 7th ARTScrawl event. Please join us!

<http://jeffwarrenartist.com/>
<https://warrenfineartgallery.com/>

From our president



Thanks to all of you who brought goodies for our potluck last month – great food, great art and nourishment for body and soul.

I look forward to seeing all of you at Encantada. Please remember to sign up for sitting the show. Check with

Ann Peterson (email: artbyvalerie47@gmail.com, 505-228-7171) if you can help out in any other way as well.

Our next meeting will be June 17th at St. Marks Episcopal Church. Thank you Anne Fritz Gordon, Rex Barron and Fred Yost for volunteering to be on the nominating committee. I hope that those who have never served in some official capacity will consider doing so and those that have already

served may be sufficiently recovered to do so again. I think that the best part of having been involved these past several years has been working with so many members that are kind, helpful, and thankfully more competent than myself.

"The purpose of art is washing the dust of daily life off our souls."

- Pablo Picasso

Charlie

Minutes from the last board meeting

May 20, 2017

Present: Charlie Aldrich, Allen Lowry, Reebe....., Ray Tussing, Sheila Richmond, Rex Baron

Meeting called to order at 8:50 AM

MINUTES: Minutes of April 22, 2017 meeting approved

TREASURERS REPORT: Approved

Monthly report:

Income from Encantada entries and MasterWorks workshop totaled \$3880.

Expenses largely for Encantada! totaled \$2689.

Total in checking is \$19,700.

Discussion around use for extra money centered on Encantada expenses, and re-printing the brochure. Reebe and Charlie will check as to whether John Meister might help with that.

!ENCANTADA!: Anne sought approval to spend money on advertising.

*@ \$300 for Signpost. 1/8 page in Albuquerque Journal Venue @ \$325. @ \$500 for ads on KUNM radio (12 spots) and other for a total of @\$1300. We also hope for a listing in the Gallery openings in the Journal.

*There was discussion of Facebook and Twitter use, which Anne seems able to access.

*For the reception, Anne will solicit donations from local restaurants. Because the show opening will correspond with Jeff Potter's birthday, we'll have his favorite cake as a special treat.

*Use of PayPal vs Square or Pay Anywhere to facilitate sales was discussed. Anne and Ray may follow up on which is more

user-friendly and how to get the info to our sitters who will be making sales.

*There will be a past-presidents' wall of paintings at the show - one painting from each, as well as a painting each from the jurors and the judge.

*Anne will check about music during the opening reception.

*Unclear just now as to who will make wall tags for the paintings. Perhaps Wanda will do it as part of her work as file master. Charlie will check this.

*Insurance coverage for !Encantada! has been sent to the Fair Grounds.

*Anne has prepared sign-up sheets for muling, hanging, intake and return of paintings, and for a show-sitter chair. To be distributed at the general meeting.

NEW BUSINESS: We need the up-dates on our membership list to be distributed. We need to find a way to get phone numbers and emails, as PayPal and other systems do not always include these.

Repeat that money needs to be spent on a new brochure with updated information. If we can get discounts for our members we need membership cards for everyone.

We will spend some money on an All Member Show - probably in 2018, and not to conflict with either MasterWorks or Encantada. Audrey Minnard and Allen Lowry will check the church calendar for this.

Meeting adjourned at 9:55 AM

Respectfully submitted,

Sheila D. Richmond

Update on Encantada

Encantada opens at Expo NM on June 30th, 5 - 8 pm! Awards will be presented at 6:30 pm.

The exhibition runs Wednesday through Sunday, 10:30 am to 5:30 pm, June 30th through July 26th.

Dates to remember:

June 25th - Mailed paintings due

June 28th, 9 am to 12 pm - Delivered paintings due

July 26th - Last day Encantada is open

July 27th, 9 am to 12 pm - Pick-up paintings

For more information, about volunteer opportunities, please contact Ann Peterson, Show Chair, at (505) 228-7171.



The poster for the Encantada! Painting Exhibition 2017 features a grid of six small painting images. The text on the poster reads: "Encantada! Painting Exhibition", "The Rio Grande Art Association's Annual Juried Show, June 30 - July 26, 2017", "The Rio Grande Art Association announces its annual juried painting exhibition", "Encantada! 2017", "Fine Arts Building at EXPO New Mexico, Albuquerque, NM -FREE ADMISSION-", and "June 30 - July 26, 2017 Artist reception will be held on Friday, June 30, from 5-8 PM".

A Potluck and Painting Show and Tell by Diane Buster

Our May meeting was all about good food and appreciating some new works by members. Our new facility at St Mark's proved very comfortable for the potluck as we could sit at rounds and visit while we ate. The paintings were lined up at the front and each artist talked about their work as Charlie held them up for us to see. The variety of subjects and techniques was impressive.

Janny had two paintings. The first was a still life of a morning glory and a flowered carpet. Janny explained she spends time waiting for the sun and looking for interesting cast shadows. She designs the set up with shadows on the top of her mind.



Happy with the results she concluded with "I think it's done!" Her second painting, a landscape featuring a fence line, is one



Janny struggled with saying this painting was her one attempt at landscape.

Diana's painting demonstrated how a playful approach can produce surprising results. The painting started as a dancer but wasn't satisfying Diana. She turned it upside down and saw an image of a fun little kid emerging and so completed this oil painting titled "Tootles."

Tana also had a couple of paintings. Her



first was a portrait of four black labs called "The Bridge Crew." All were panting with their tongues dangling out. This delightful

detail combined with their facial expressions showed their very different personalities. Tana's second piece was a still life of a single orchid



and a jade statue. Tana felt this one felt a little flat.



Suggestions were to add additional flowers at different angles or to keep the one flower but to warm up the shadows.

The next painting was one of Mary's grandchild in a blue and green dinosaur costume. Mary loved the mischievous expression on her face and her open mouth smile. Mary commented that she thought her granddaughter looked older than she actually was, but did feel she caught the fun of the moment. Rex had a diptych of nudes at their artist easels. The paintings started with a life drawing sketch of the male model. Rex threw in a landscape background. He realized a sketch he'd made of a female model Suki would make a good second painting for this "Desert Studio" diptych. These acrylic



paintings were done in a cross hatching

technique like one would use for egg tempera. The whole process Rex commented begs questions of differences between painting and drawing, where one starts and the other lets off.



Alan's abstract painting titled "Falling Up" was next. Alan is experimenting with hard architectural



edges and blended colors in his intuitive design. He starts by establishing large vertical and horizontal edges and working from there. We enjoyed the different illusions created as Charlie rotated the painting, but agreed that Alan's orientation worked best. Rex made a color theory comment how the bright colors were enhanced by being placed next to grayed versions of the same hue.

Charlie's construction was about Enrico Fermi. Charlie explained that Fermi



calculated accurately the force of an atomic blast by dropping paper pieces on the floor before the

blast and noting their movement afterwards. Included in the assemblage were folded origami paper cranes which talks both to Fermi's bits of paper and the wonders of science and the Japanese legend of the 1000 cranes and the numbers of deaths in the tragedy of war.

Karen's first of two paintings was titled "Breakfast at 7-11" and was an Edward Hopper like view of a 7-11 from Karen's

Potluck/Show and Tell (continued)



bus stop at sunrise. The empty street and large sky mass contrasted with the busy activity

and life in the 7-11. Her second piece was very different. It portrayed Aspen trees and deer in the Jemez. Texture and a high key palette helped to create the playful fanciful scene.



Ray is experimenting with a poured acrylic technique for his Truck and Flowers entry



to Encantada. Ray uses Liquitex pouring medium on a Masonite substrate that he constructs. Ray emphasized that nothing is really flat and that the larger the area poured the more surprises that may occur. He said he blew the first piece as the pour all went to one area. Ray uses a heavy gel to "draw" lines that enclose shapes like the truck elements. A cake decorating tool creates the relief and texture for his clouds and flowers. Small areas he daubs with a brush rather than pouring.

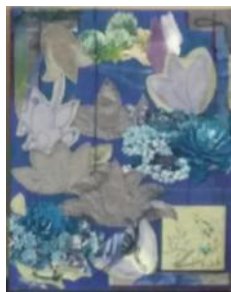
Lyle had a pair of streets scenes painted from a recent trip to Cuba. He was surprised by how ornate the Neo-Classic buildings were that line the streets of Havana. They were very run down and



Lyle depicted this decayed elegance by painting loosely with broken color. The classic red 50's

Chevy added an essential authentic touch to fill out the scene. Lyle said he loves working with broken color and intends to continue a series of these paintings.

Anne created a layered collage on an acrylic painted support titled "My Favorite Colors." She put together memorabilia and left over pieces of projects including photos from the Tucson Botanic Gardens, strips of ribbons, painted silk pieces embellished with a form of Japanese stitching, and pieces of turquoise all in different shades of blue. Anne said it was fun building this piece and said she particularly liked the movement of the ribbons.



Fred brought in a photo and three drawings to show one of his experiments. About ten years ago, Fred with Jeff Potter was part of an abstract painting group called the "Destructionists". They had a challenge to take a realistic piece and to deconstruct it in two steps. Fred had painted a portrait from a photograph he had taken of a gentleman he'd seen at Weems one day. Using the portrait as reference he did a sketch that emphasized



the blue costume and enlarged the scale of the head. The final painting keeps the blue element and adds touches of red, yellow and white to emphasize the facial expression. Tip: Fred applies



two grommets at the top of his drawings so he can store lots of drawings by hanging them up together.

Anne (Valerie) brought in a painting inspired from photo albums she has access to of Oslo Sweden street scenes. The photos taken in the 40's and 50's were faded and basically black and white. Anne decided to play with bright happy colors to depict these row houses probably built in the late 1800's and early 1900's.



Eliza brought two paintings. The first was a landscape from the Japanese pond at the Bio Park. Eliza was attracted to the reflections of the bridge in the pond and a rock that echoed the shape of the bridge. Her



second piece was a playful experiment using oil and cold wax titled "What About the Dog". Eliza said the oil wax 50/50 mix is wonderful to play with as it has a buttery texture and dries quickly.



continued on page 5

Potluck/Show and Tell (continued)

Finally, Diane (me) brought in her floral still life from the Joe Anna Arnett workshop. Joe Anna encourages using big brushes and lots of paint. She likes what she calls "sticky uppy" paint and this workshop piece has lots of thick paint. I don't generally paint still life, preferring landscape. What I took away from the workshop besides the big brushes and thick paint was the idea that a painting can happen in two steps. Paint the beginning which includes the drawing or composition plan, and massing in the darks and half tones of local color. Then stop and begin the end which is the mostly about painting the lights and concentrating detail in the center or area of interest.



Congrats to the award winners (RGAA members) from the New Mexico Watercolor Society's spring show!

First Place
Patricia Rios
Hoping



Teresa's Framing
P. K. Williams
Ascendancy



Second Place
Rex Barron
Surveillance



Workshops and events



Exploring the World of Mixed Media and Collage

A workshop with Donna
& Charlie Aldrich

interesting images. Donna is a pastelist and Charlie works in acrylic and this workshop will focus on creating collage in both mediums.

Please sign up early; class size is limited.

For registration or more information please visit our website at www.newmexicoartleague.org or call 505.293.5034.

We are located behind the Juan Tabo Library at 3409 Juan Tabo Blvd, NE, Albuquerque, NM. 87111.

A Signature Member of the Pastel Society, Donna describes her work as visual poetry working geometric patterns into her compositions, portraying an Asian appeal while representing man's impact on nature, whether positive or negative, no landscape remains untouched by humans. Charlie, also a muralist, describes his work as integrating a love of realism with an equally deep love of abstract texture, capturing the passing and fragile beauty that emerges from surrounding chaotic entropy. Both artists exhibit nationally and internationally.



July 29 - 30
Saturday - Sunday
10 AM to 4 PM
Art League members
\$140
Non-members \$160

Don't miss this rare opportunity to work with these exceptional collage artists, Charlie and Donna Aldrich! Both use collage in their work as a technique and as a source of great inspiration. This two-day workshop will explore ways to develop creative ideas for painting while incorporating unique materials and techniques that may lead to new ideas about your work. Emphasis will be upon fresh approaches to composition and novel ways to produce

Workshops and events (continued)



Art of the Flower exhibit opens Tues, June 6, 2017, and runs through July 8, 2017. This show is always an astounding view of the beloved subject of the flower by artists living and working in New Mexico.



Toni Seidel, artist

The reception will take place on Sat., June 17, 2017, from 5 PM to 7 PM.

The gallery is free and open to the public from 10 AM to 4 PM, Tues. through Sat., at 3409 Juan Tabo NE, behind the Juan Tabo Library in Albuquerque. It is wheelchair accessible.

Looking ahead at the League...

Call for entries for **QUENCH: WATER IN THE DESERT**



July 15 is the deadline for entering **Quench: Water in the Desert**, a landscape show focusing on New Mexico artists' unique interpretations of the precious and beautiful element of water in the desert in its various forms: rain, clouds, rivers, lakes or evidence of it in arroyos. This exhibit will open August 29, 2017 and close on October 7. See our [website](#) for prospectus.

For more information on ALL events and classes: call 505-293-5034 or visit the [NMAL website](#).

Two national/international art organizations worth checking out:

Society of Layerists in Multi-Media (<http://www.slm.org/>); they have a strong regional presence. Contact Laura Pope if you are interested in joining: lpopeart@gmail.com.

International Society of Experimental Artists (<http://www.iseartexhibit.org/>); ISEA strives to give its members new and exciting artistic avenues through which they can display their work.

Lannie Alexander has 3 paintings in the upcoming **NMAL Art of the Flower** show.

The show runs June 6-July 8, with the reception on June 17, from 5:00-7:00 pm.

NMAL, 3409 Juan Tabo NE
Albuquerque, New Mexico
505-293-5034



CALL TO ARTISTS

The **Los Lunas Museum of Heritage & Arts** is accepting submissions for the 5th Annual Juried Art Exhibit "**The Way it Was**." Selected entries will be displayed November 11 - December 30, 2017.

The entry deadline is September 30, 2017.

Eligibility

Open to artists 16 years of age and older living in the state of New Mexico.

Entries must be original works and may be any medium (e.g. acrylic, oil, pastel, watercolor, pen and ink, photography, ceramics, fibers and mixed media) that depicts the specified theme.

To enter, use the form at <https://form.jotform.us/71044303079146>.



RGAA 2017 Officers and Committee Chairs

President:	Charlie Aldrich cdaldrich409@yahoo.com 505-433-1141	Historian:	Charlie Aldrich cdaldrich409@yahoo.com 505-433-1141
Vice President:	Rex Barron rexbarron@q.com 505-822-9962	Refreshments:	Carolyn Poole crpoole@comcast.net 505-828-3909
Secretary:	Bonnie Buckley bbuckley0870@gmail.com 505-554-3891	Newsletter:	Reebie Nolda rebecca.nolda@gmail.com 505-944-6854
Treasurer:	Ray Tussing etussing@msn.com 505-800-8108	Website:	Wanda Portee wportee4529@comcast.net 505-800-8108
Programs:	Mary Julyan mdjulyan@comcast.net 505-298-8420	Facebook:	V. Ann Peterson artbyvalerie47@gmail.com 505-228-7171
Encantada Chair	V. Ann Peterson artbyvalerie47@gmail.com 505-228-7171	Masterworks Workshop:	Bonnie Buckley bbuckley0870@gmail.com 505-480-7020
Encantada Filemaster	Wanda Portee wportee4529@comcast.net 505-250-7304	Masterworks Filemaster:	Audrey Minard aminard42@msn.com 505-281-1966
Membership:	Allen Lowery Spiritpath44@comcast.net 505-306-5131	Exhibits & Publicity:	Open

Some links to websites that list exhibition opportunities:

[Professional Artist Magazine](#) - Calls to Artists

[CaFÉ FOR ARTISTS!](#) Find Calls. Apply. Manage your entries.

[Juried Art Services](#) - the world's first and most advanced digital jurying and application system

[EntryThingy for artists](#)

[ArtDeadline.Com. *The Art World's Source for Income & Exhibition Opportunities*](#)

[TheArtGuide.com](#)

[artshow](#) - the world of art at your fingertips



About RGAA

The Rio Grande Art Association is a not-for-profit organization dedicated to the education and promotion of New Mexico artists working in oil, acrylic, and mixed media not normally shown under glass.

Rio Grande Art Association

P.O. Box 53307
Albuquerque, New Mexico 87153

President: Charlie Aldrich
(505) 433-1141
cdaldrich409@yahoo.com

Visit our website at www.rgaanm.org. You can pay your annual dues online, check the calendar for events, download a prospectus for an upcoming show, etc.

...and check out our [Facebook page](#) for up-to-the minute news.

