



Rio Grande
Art Association

The

Palette

Volume 15 Issue 10 April 2014

**Next Meeting, Saturday, 19 April, 10am.
Hispanic Center, NM Fair Grounds, EXPO NM**

President's Letter

**Our April 19th meeting will be at the Hispanic Art Center at EXPO-NM.
Paul Murray will be our presenter.**

MasterWorks of New Mexico will be open to the public beginning April 4th through the 26th of April. Congratulations to those who have the privilege of showing their work, whether in the Standard Division and/or the Miniature Show. Many accolades to Sheila Richmond and John Meister for winning awards. Be sure to visit the exhibit at least once and you will want to return for further observation of the quality of work. Cynthia Rowland will be our WorkShop instructor during MasterWorks this year from April 10th through April 12th. She is having a free oil demo on Saturday, the 12th of April from 9:30-11:00am.

RGAA sponsored two cash awards of \$50 each, given to two student artists representing the National Scholastic Arts Awards. Ann Peterson selected two pieces; one acrylic by Hye Jin Park and the second water based oil by Emma O'Connell. I presented their awards at a lovely reception on March 22nd. This is one of the building blocks to a possible career in art. I am a proud recipient of a Gold Key sponsored by the National Scholastic Art Association in my younger days.

Our premier art Exhibition, "Encantada" is moving forward. If you would like to help with this project, Cecelia McRoberts or Marybeth Isaminger will welcome you with open arms.

Our new Membership Chair is Allen Lowery to whom I extend my appreciation for filling this position due to Jeff Potter having to step down because of illness. There are still key positions looking for volunteers. We need a Vice-President and someone to chair the Exhibits and Publicity Committee. OK - I said it very simply...but I am begging for you to graciously say, "I will volunteer, Ms. Pres". Our Society is a fulfilled, inspiring, riveting, awesome group!!! Let's make sure we continue this momentum. If you have even a slight inclination to volunteer, and you might be wavering, I can help you with your decision, just call me.

Have fun creating art; most of all be passionate about it.

**Bonnie Buckley
President**

Monthly Challenge:

This month's challenge is to create a landscape painting and color the sky a hue other than blue. This is a good exercise in using your color sense to integrate land and sky in a way that is compositionally pleasing. Enhance mood and produce ambient light by using similar colors in land and sky, or use bold color in a more expressionist style. Whichever way you approach this challenge, make thoughtful color choices and have fun.

Tom Blazier

Below is a painting by **Cecelia McRoberts** in response to last month's challenge. (for details please refer to last month's Palette Newsletter)



There are still places available for the Pastel Workshop at Masterworks with **Elizabeth Sandia**: April 14-16, 10am-4pm. Tuition: Pastel Society members \$250 and non members: \$275. To register please contact: Donna Houston, 505-293-9407 or email: donna_houstonhouston@aol.com



Left: "Canyon Sunlight" by Elizabeth Sandia. Pastel

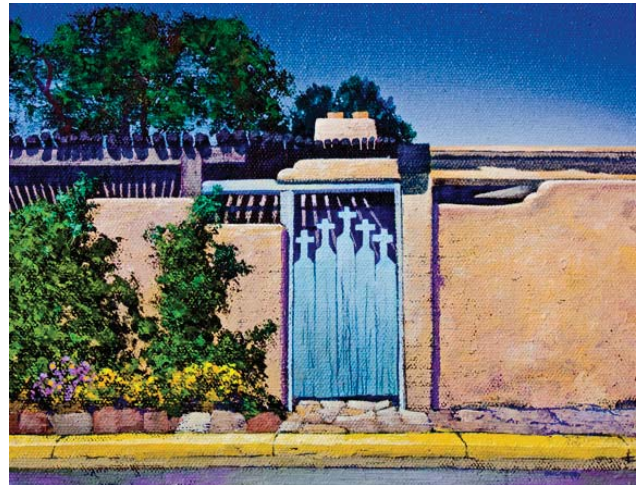
April's Demonstration

Our Presenter for April is Paul Murray. He describes his demonstration as follows:

"My demo for Masterworks will be in Acrylic. I know that some oil painters don't hold acrylic in high regard, but for demonstrations it really works well. With acrylic I can work wet in wet, as well as explain more complex ideas, dry on dry due to the fast drying time of acrylic paint. Virtually everything I explain with this demo is replicable in oil paint. As always, I plan to finish the demo in the time allotted -- usually an hour.

Finally, a word about acrylic paint. Although I have been using oil paint more and more, there is a lot to be said about modern acrylic paints. In particular, Winsor & Newtons Artists Acrylic paint has worked out really well for me. The shift in color when it dries is usually minimal and the color saturation is greater than acrylic paint of just a few years ago."

Below a painting by Paul Murray "Santa Fe", Oil/canvas, 16 x 24". Acrylic/Linen, 9 x 12"



Congratulations to **Rex Barron** whose work "The Passion and Death of Poopsie" which was shown at the NM Art Museum as part of Urban Legends in 1991 is being included in a new show on urban legends at the Begovich gallery at Cal State University in Fullerton, CA. The show is called "Hearsay" and will run through April. The piece is entitled "The Passion and Death of Poopsie," and is done with pastel pencils on black paper. See photograph of Poopsie's fate on the next page.



The demise of Poopsie by Rex Barron

Other Member News

Paint the high country of New Mexico with Tom Blazier. Tom Blazier will offer a five day workshop titled *Refining the Landscape* June 9 - 13 in Cloudcroft, New Mexico. Studio and plein air sessions will focus on distilling the visual complexity of nature to a few compositional choices, use of limited color palettes and values, and the economy of brush strokes. Tom will demonstrate using oils, but attendees may use their preferred medium. Plein air painting gear will be needed for outdoor painting sessions.

more information and to register, visit the website: Cloudcroft Workshops or contact Tom Blazier: tblazier@hotmail.com, <http://www.tomblazier.com> <http://tomblazier.blogspot.com>



Left: Painting by Tom Blazier

Newsletter Editor's Reminder: The deadlines for submissions is the 4th of each month. The Palette is published 10 times per year. If you have a show at the beginning of the month I need to have the info by the 4th of the previous month. Thanks and happy painting.



NEWS

Please join us for the opening of the second WAG (Wednesday Abstract Group) show of exciting abstract paintings! ...opening Saturday, May 10 from 4-7 pm at La Mesa Presbyterian Church Gallery, 7401 Copper NE (just east of Louisiana). Featured artists are Nancy Wygant, Janine Wilson, Patricia Williams, Sid Simpson, Pat Scanlon, Sandy Ohlgren*, Rebecca Nolda*, Meredith Macpherson*, Ed Jordan, Linda Grace, Sarah Geiger, Donna Dionne*, Sally Boyd, Rex Barron*, and Lannie Alexander. (*member RGAA.)

Gallery hours are from 9 am to 3 pm weekdays. Contact Donna Dionne at 350-4436 or djdionne41@gmail.com for more information.

Congratulations to **Ming Fraz** on her forthcoming DVD on Splash Ink Painting. This is filmed and edited by Interactive Magazine. You can see a preview on the following link: <https://www.youtube.com/watch?v=3S3g7zP> or just put in Ming Franz in the youtube search box.

Ming also has a solo show coming up at the NMAL

Through the Mist
 Traditional and Abstract
 Splash Ink Paintings
 featuring the new works of
 Ming Franz

Reception: May 16 - 5 PM to 8 PM
 Exhibition Dates:
 May 3 to May 28, 2014

We also invite you to visit our website
 for classes, workshops and
 exciting events for the
 fine arts in New Mexico

NMAL
newmexicoartleague.org
 505-293-5034

Masterworks Prize Winners submitted by John Meister

AWARD	NAME	TITLE	MEDIUM
First Prize	Pat Durgin	Aspens in Snow	Oil
Second Prize	Manfred Rapp	Depression Blues	Oil
Third Prize	Albert Handell	Rock Ledge Colorado	Oil
Hon Mention	Joyce Cantergiani	Fleurs de Provence	Oil
Maggie Price Award	Deb Pero	Winter Hay	Oil
Don Peterson Award	Sheila Richmond	Bud's Barn	Oil
W Hurley Enchantment Award	Robert Estep	Rio Chama III	Acrylic
Carol Bryant Creativity Award	Michael Meyer	Mayan Warrior	Oil

Barbara Lohbeck and Kim Bell: The Miniature Division of Masterworks
March 15, 2014 RGAA Meeting

The miniature show is the fourth division of the state wide juried show, Masterworks, which hangs for the month of April each year. The miniature show is open to many media including acrylic, colored pencil, drawing, egg tempera, encaustic, gouache, graphite, inks, mixed media, oil, painted porcelain, pastel, hand-pulled prints, sculpture, silverpoint and watercolor. Miniature art is fine art on a small scale with minute attention to detail, details which can sustain close inspection or magnification without loss. Barbara is the sales floor person and her business, Bardean LLC, is the sponsor of the miniature division. Kim Bell is a miniaturist and has won numerous awards for her miniature paintings.

The feel of miniature is different from a simple small painting. The scale should be 1/6th or smaller of what is portrayed. For example, a portrait of a head would be 1 1/2" or less! For this show the dimensions must be 25 square inches or less for the painted surface. Frames must be at or under 56 square inches. If an image goes onto the mat or around the edges of a gallery wrap, the extended image must measure within the 25 square inches. Framing is included in the judges' scoring of the work and should complement the painting. Framing material is to be no greater than 1 1/8 inches in width and 1 inch in depth. For this show, two D-rings or two small screw eyes must be attached to the back for hanging. Wire is not necessary.

Barbara provided us with a handout with some information on the history of miniature painting. The Latin word "miniare" meaning to paint in red described the outlining of figures in red paint. Monks who adorned manuscripts used "minium" a red lead paint in their illuminations. In the 17th century, "in little" was used to describe the portrait miniature often painted on vellum or thin sheets of ivory. Marriage negotiations often included miniature portraits which was how one of his unfortunate wives was introduced to Henry VIII! Miniatures appeared on pins, pendants, buckles, buttons, and more recently on box tops. Rembrandt, Reuben, and Titan were popular miniaturists. In America miniature portrait artists include Samuel Morse, John Singleton Copley, and Thomas Sully. Today we associate the word miniature with the small scale.

Examples of the use of detail that holds up to magnification, use of the traditional element of calligraphy, and

framing and matting that accentuates the small scale were all pointed out. Barbara added to the discussion that abstracts are harder to scale. Smooth surfaces are best for the detail required in miniatures. There are miniature supply sites on line like www.miniartssupply.biz . Natural vellum, a simulated ivory called ivorine, or sanded gessoed panels are all good choices. Sable brushes are good for oils.

For this show, three jurors will score the works individually. There is no discussion among the jurors. There is a maximum score of 15 for each painting. Framing and matting counts for 3 points. Essence of miniature is 6 possible points. Technique which includes style and originality as well as use of medium is also 6 possible points. The paintings that are juried in are displayed on tables by category for the judging and awarding of ribbons. This year's judge is Melinda Beavers.

Diane Buster

Below Some of the miniatures shown at last month's meeting



Other News that may of interest to members:

Harwood Exhibition Program

Harwood Art Center's Galleries are dedicated to providing exhibition, audience expansion and professional development opportunities to artists working in any media and from diverse creative fields. We encourage proposals from individuals and groups to show work in our Main or Front Galleries in 2015.

Proposals are accepted on a rolling basis. For priority consideration in the 2015 Exhibition Calendar, applications must be received by Monday, March 31, 2014. apply now

SURFACE: Emerging Artists of New Mexico

SURFACE: Emerging Artists of New Mexico (June 2014) is Harwood Art Center's 2nd Annual Juried Exhibition, Awards and Professional Development Program, presented in partnership with Albuquerque Art Business Association (AABA). SURFACE is dedicated to cultivating the creative and professional growth of artistic talents and to expanding their visibility in our community.

Applications are due Monday, March 31, 2014. apply now

Remote Response: Social Justice through the Artist's Eyes

Remote Response (September 2014) marks Harwood Art Center's 5th annual international exhibition program dedicated to the artistic exploration of contemporary social justice issues. Previous themes include Disaster/Resilience (2013), Borders & Boundaries (2012), Asking & Telling (2011) and Gender & Identity (2010). Applications are due Thursday, May 1, 2014. Remote Response is open to artists from all countries. Applications are due Thursday, May 1, 2014. apply now

Harvest CSA: Community Supported Art (2014-15), our 2nd annual CSA, provides an opportunity for local artists to gain exposure and connect with new collectors. The 10 selected artists will each receive a \$1000 stipend to create a body of 56 pieces, which will be delivered to program shareholders during the 2015 season of the Downtown Growers' Market.

Applications are due Friday, August 1, 2014. apply now

Art School Teaching Positions

We invite teaching artists in all media to apply for a position in our Art School program for adults and teens. Art School provides students the opportunity to develop and refine their creative skills in a focused environment, with the support of excellent instructors. Classes run in the Fall and Spring, and they vary in subject matter and structure - from weekly evening sessions to one-off weekend workshops.

Applications are accepted on a rolling basis. For priority consideration in the Fall 2014 Art School Calendar, applications must be received by Tuesday, April 15, 2014. apply now

Reminder

Cynthia Rowland will be offering a demonstration on the last day of her RGAA-sponsored workshop at Masterworks on Saturday, April 12, 2014 from 9:30 to 10:30 am. Her workshop offers insight on how to Incorporate Objects and Space into Your Figure or Portrait Work.

The demonstration is free and open to the public, at Hispanic Arts, EXPO NM (there may be a parking fee).

Spirit of the Horse show at NMAL

The Open Day for the above was Sunday 30th March and several RGAA members had art on the walls and many more attended the festivities. A whole wall was devoted to paintings of horses and some of the proceeds went to the charity as this is the Chinese Year of the Horse which began in January. The charity's mission statement says inter alia:

“New Mexico Horse Rescue At Walkin N Circles Ranch, Inc. (WNCR) exists to rescue, rehabilitate, and provide proper care and humane treatment to unwanted, abused and abandoned horses! Our purpose is to provide each rescued horse humane and caring attention in which fear and pain are left at the front gate. Following a total assessment, gentle rehabilitation and/or retraining, and a rigorous screening process, we endeavor to find loving adoptive homes for each of our rescued horses. Our primary objective is to provide each rescued horse a chance for a new start in a useful and productive life.”

There were a few horses there to see. Among the other attractions were stalls selling miniature cacti, fused glass art, Ikebana, and Chinese calligraphy. Sue Hayakawa was there with brush and Chinese ink in hand to transfer one's name into Chinese calligraphy. It was an interesting mix of arts and crafts with real horses and food thrown in for good measure. A most enjoyable day.

Below a picture of Paul Murray during his demo during Masterworks 2013



RGAA Officers and Chairs 2014

President: Bonnie Buckley 505-480-7020
bbuckley@cblegacynm.com

Vice-President: Diane Buster (Interim) 505-281-3600
Diane_buser_1@msn.com

Secretary: Sheila Richmond 505-856-0245
sdrich111@comcast.net

Treasurer: V Ann Peterson 505-480-0862
vapartist@hotmail.com

Programs: Mary Julyan 505-298-8420
mdjulyan@comcast.net

Encantada: Cecelia McRoberts 805-294-3097
2014 mtlforev@aol.com
Marybeth Isaminger 836-4826
misaming@q.com

Masterworks John Meister 505-265-5218
Meister@comcast.net
Bonnie Buckley

Exhibits & Publicity: Open

Membership: Allen Lowery 505-306-5131
Spiritpath44@comcast.net

Historian: Adair Peterson
donaldpvadair@cs.com

Masterworks: John Meister (File Master)
2014 Bonnie Buckley (Workshops)

Encantada: Cecilia McRoberts,
MaryBeth Isaminger
mtlforev@aol.com
misaming@q.com

Refreshments: Marybeth Isaminger 505- 836-4826
misaming@q.com

Newsletter: Nora Sanders 505-891-3820
thedancingbrush@gmail.com

Assoc. Editor: Wanda Portee

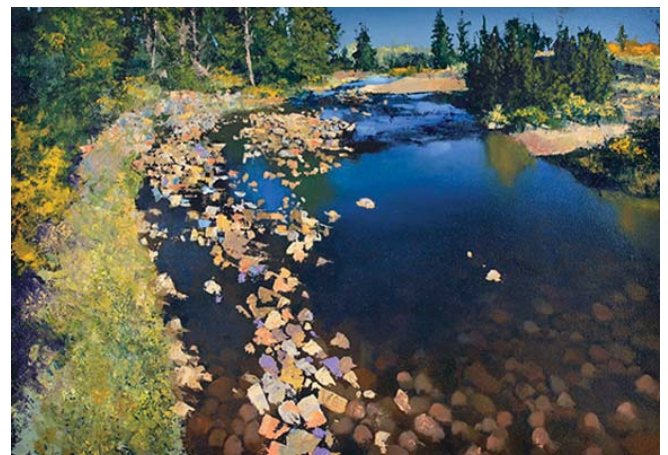
Websites: Rebecca Nolda 505-323-4300
rebecca.nolda@gmail.com
www.rgaanm.org



The Rio Grande Art Association is a not-for-profit organization dedicated to the education and promotion of New Mexico artists working in oil, acrylic and mixed media not normally shown under glass.

Rio Grande Art Association
P.O.Box 53307
Albuquerque, NM 87153

President: Bonnie Buckley
Phone: 505-480-7020
Email: bbuckley@cblegacynm.com



Above: Painting by Paul Murray in oil 16"x24"
"Headwaters"